

# SHERPA

A tool to support the design of regional air quality plans

P. Thunis, E. Pisoni, B. Degraeuwe, A. Clappier, G. Maffei



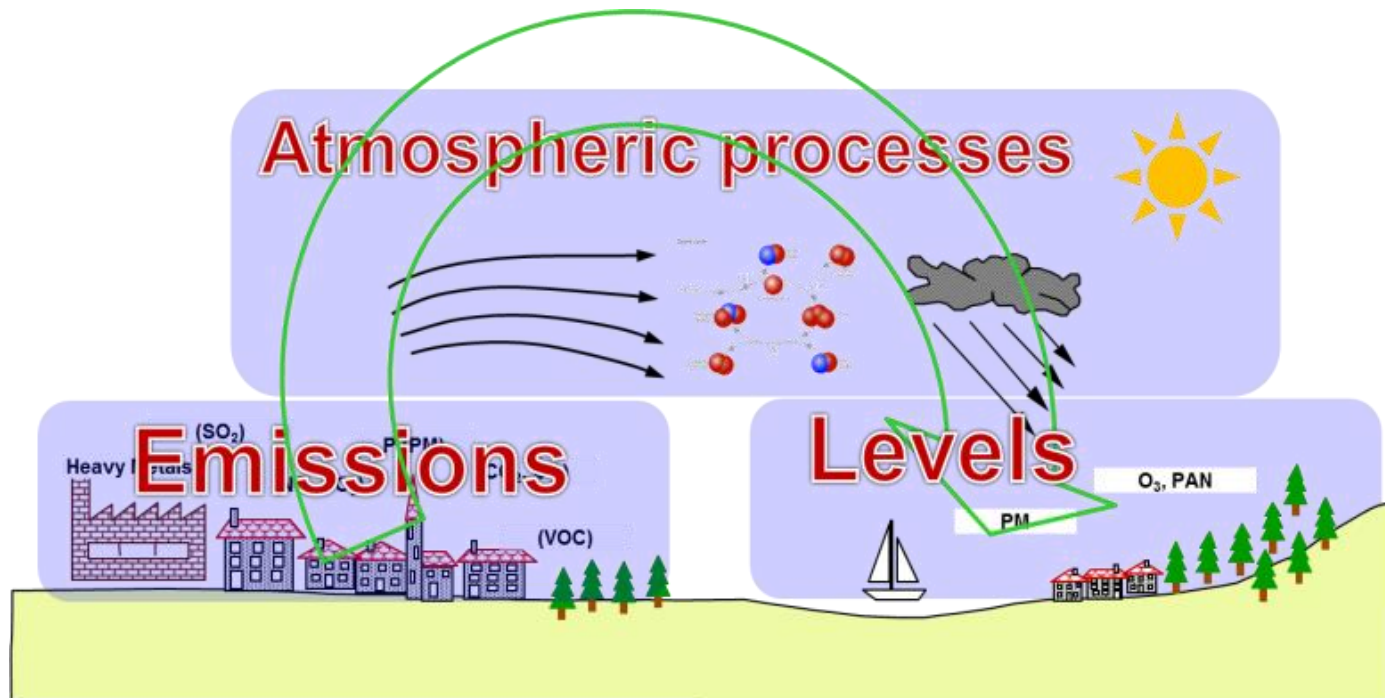
SHERPA  
Screening for High Emission  
Reduction Potential on Air



European  
Commission  
Joint Research Centre

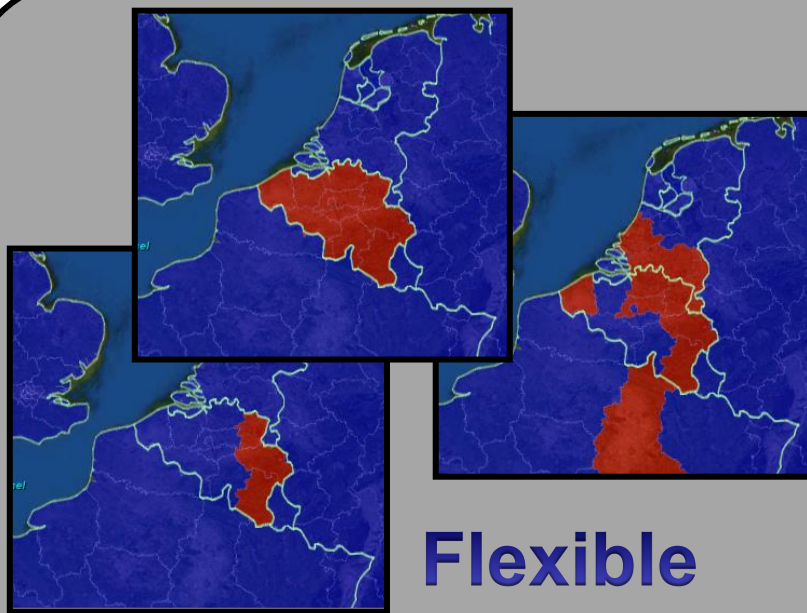


Software developed by TerrAna  
under the Contract Procedure  
no. JRC/IPR/2014/H.2/0023/NC

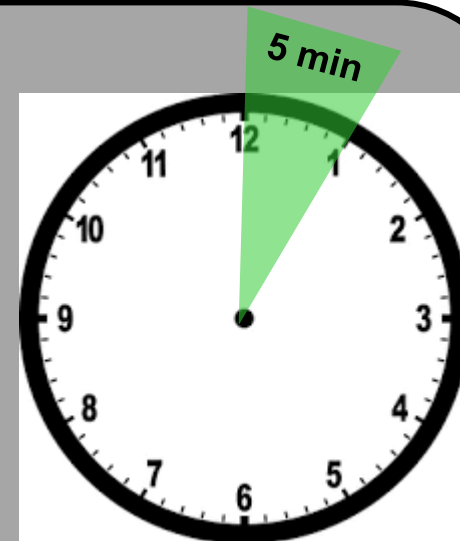


SHERPA: flexible, fast and accurate screening of the emission – concentration links

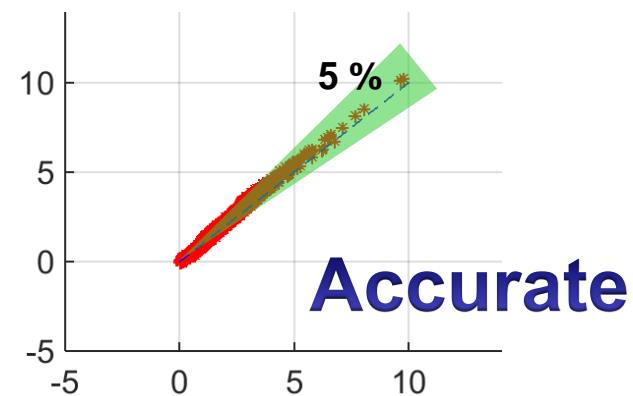
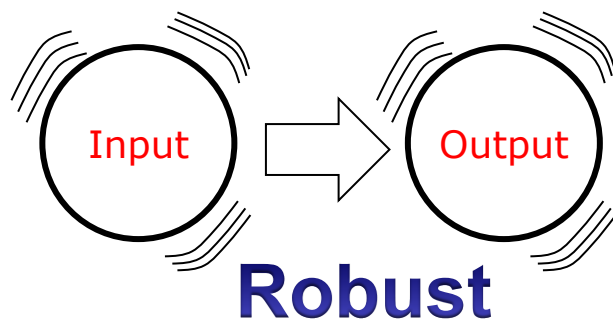




**Flexible**



**Fast**



# SHERPA loop



**Source  
allocation**

Key sectors/pollutants in my control region?

**Governance**

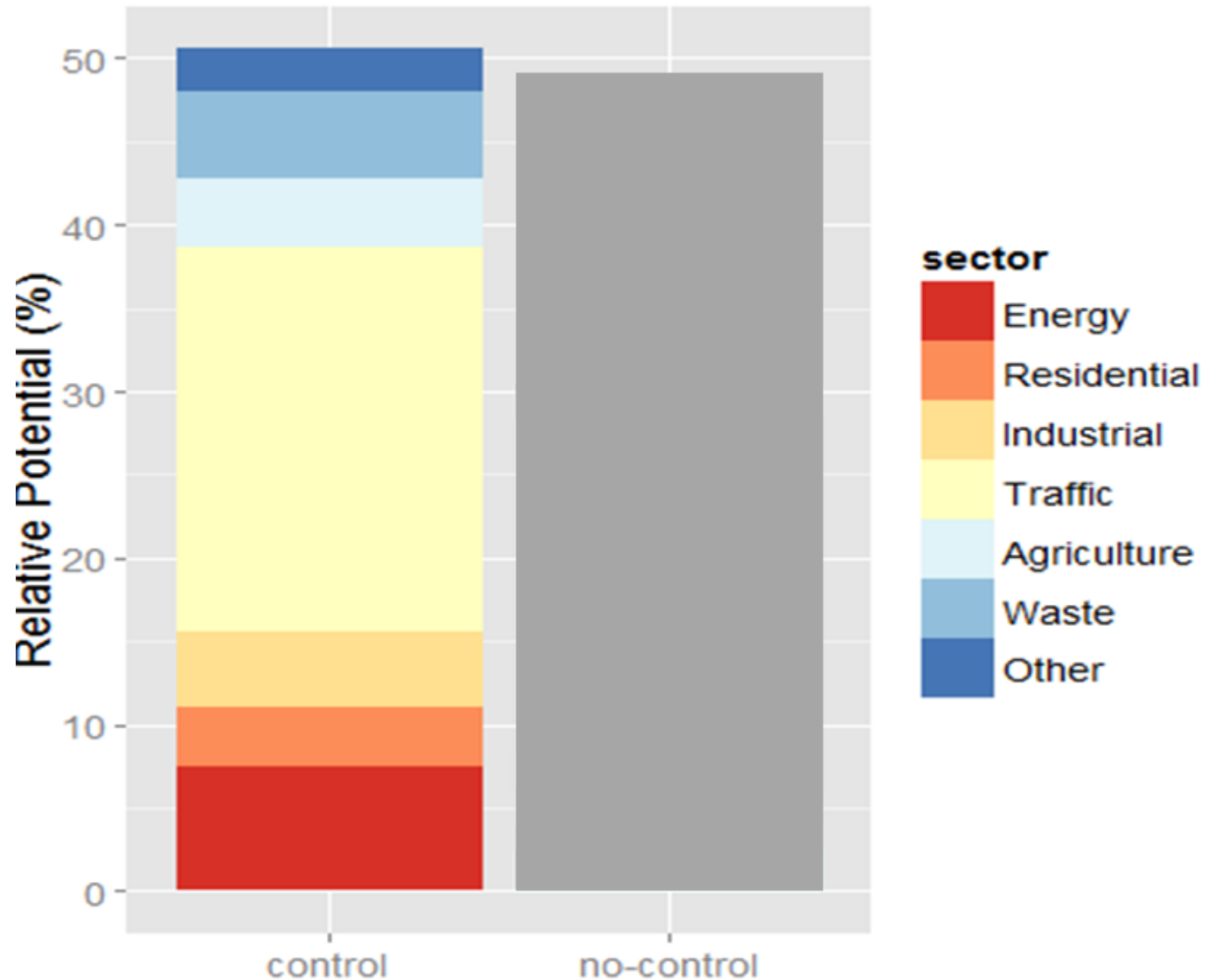
Should I coordinate actions with my neighbors?

**Scenario**

Scenario to be tested, based on previous steps

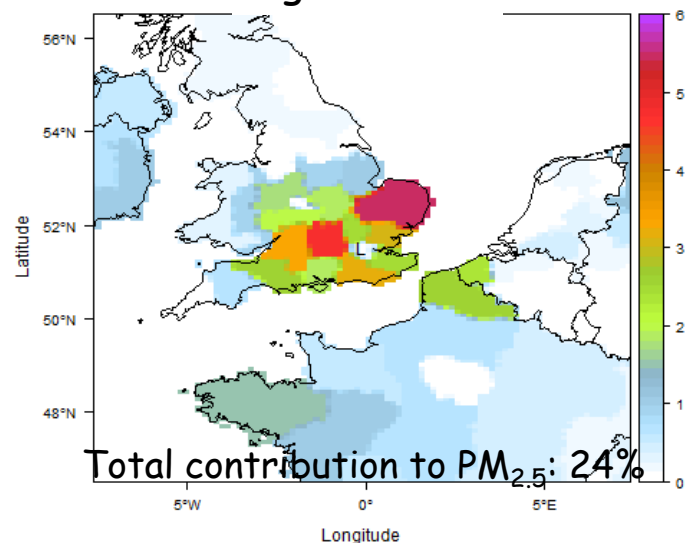


# Step 1: Source allocation



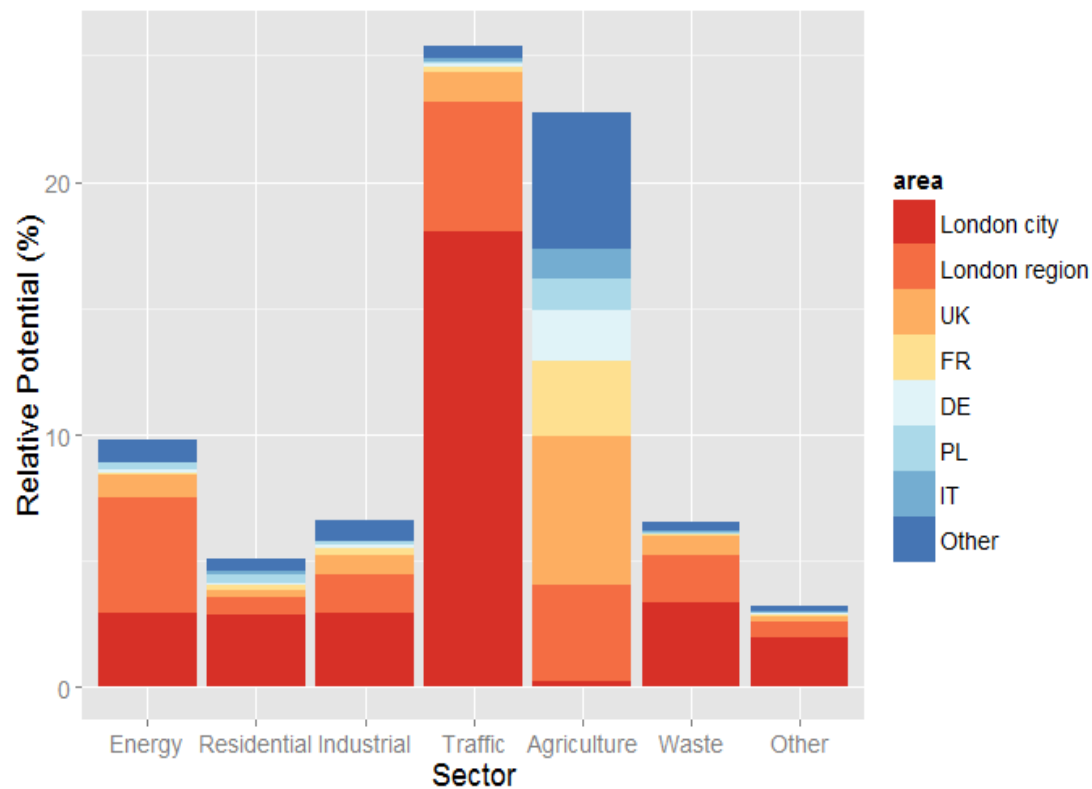
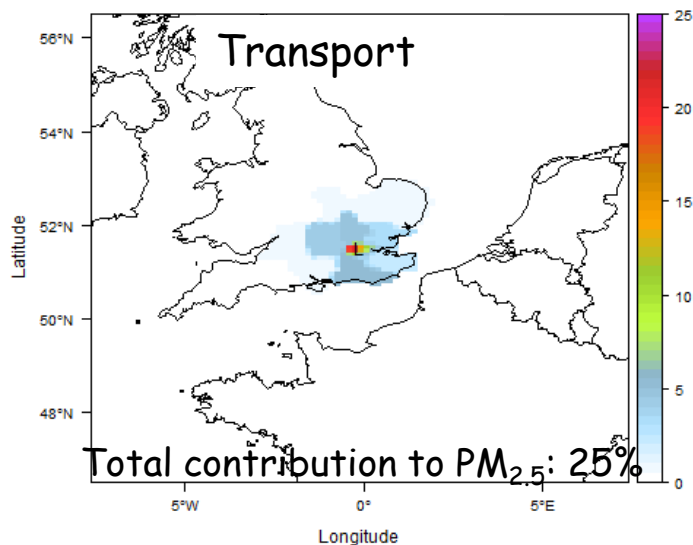
# Step 2: Governance

## Agriculture

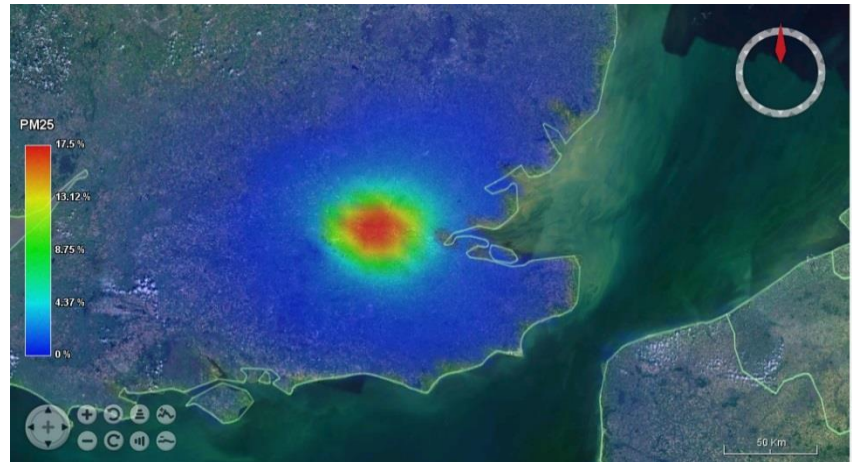
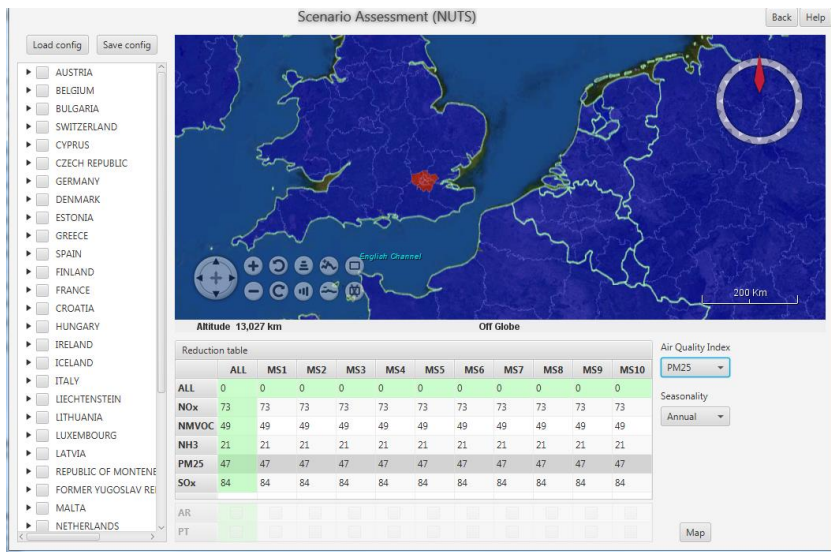


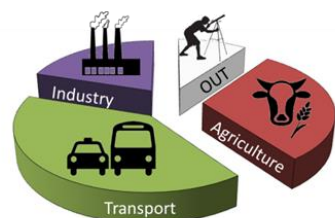
## London SNAP 7

## Transport

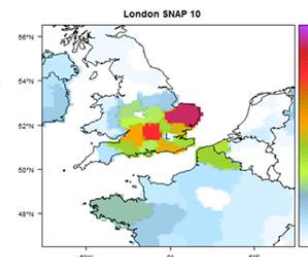


# Step 3: Scenario





**Source allocation**



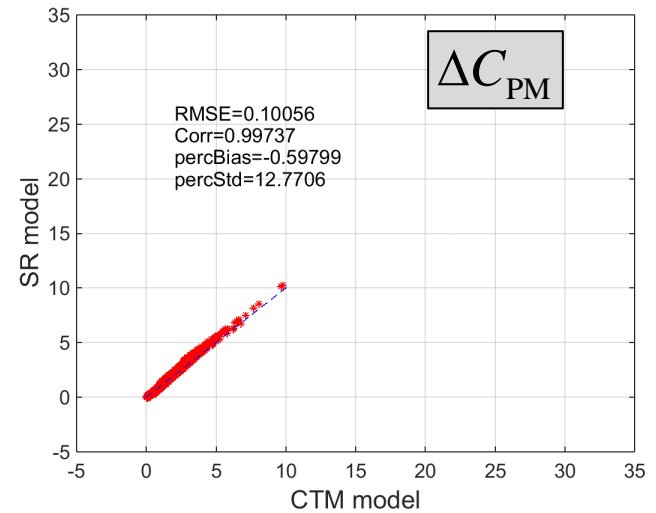
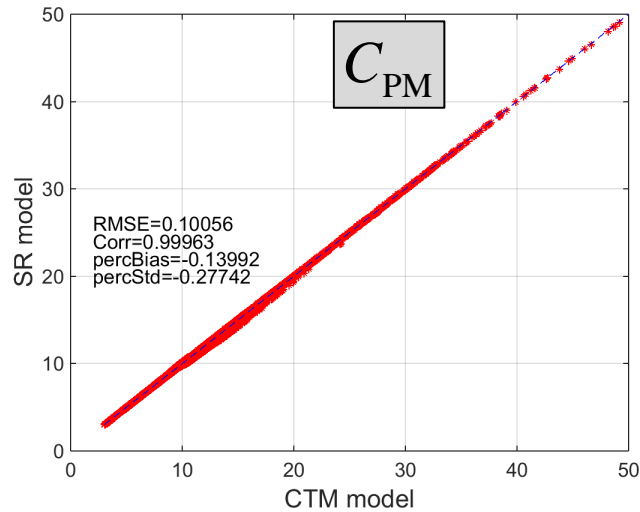
**Governance**



**Impacts**

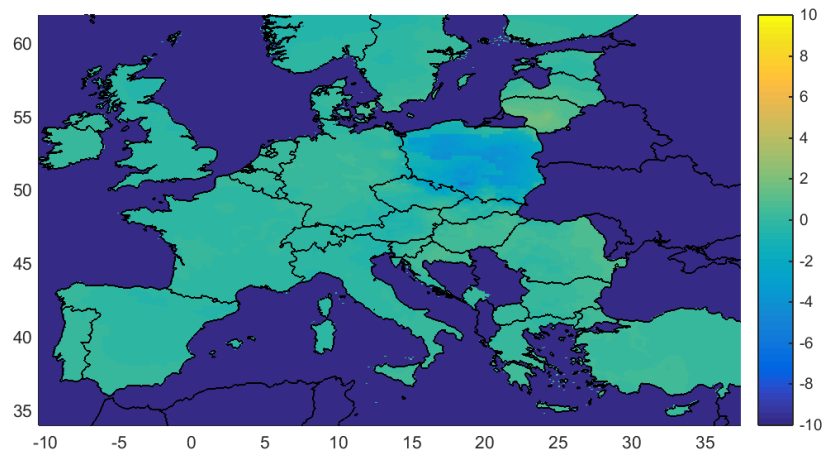
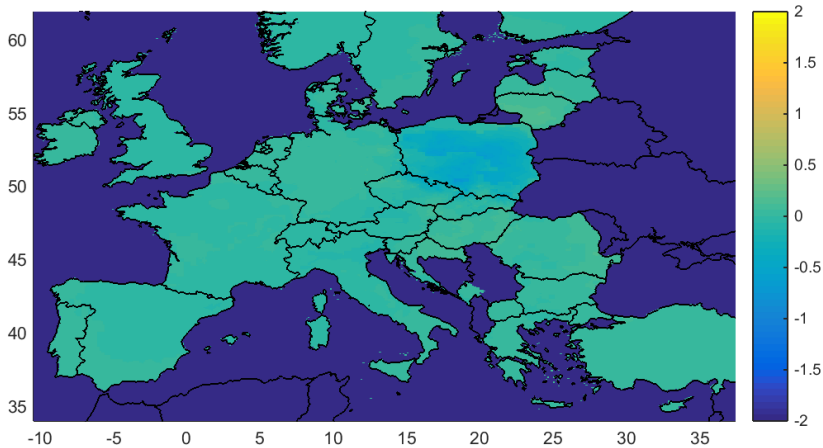


# Validation: Poland case



$$C_{PM}^{S/R} - C_{PM}^{CTM}$$

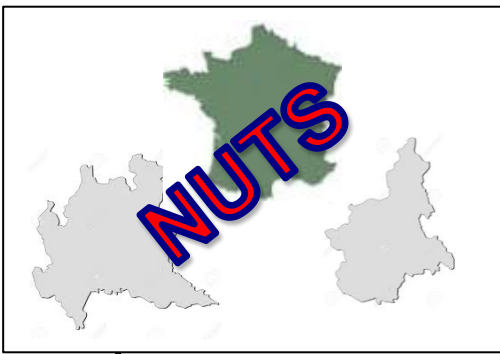
$$\left( C_{PM}^{S/R} - C_{PM}^{CTM} \right) / C_{PM}^{CTM} \times 100$$



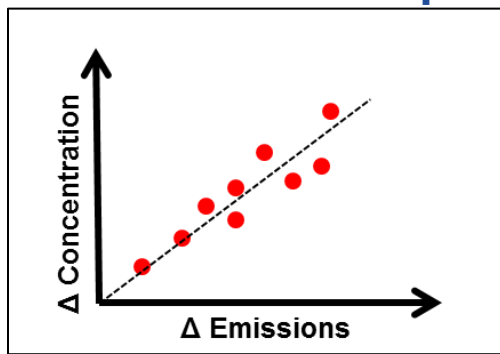
# Flexibility and adaptability



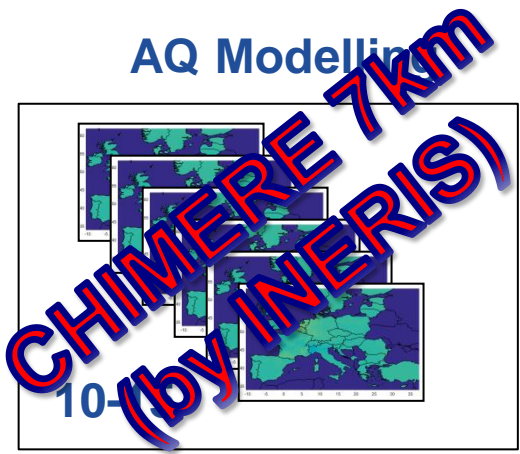
## Shapes



## S/R Relationships



## AQ Modelling



Load config Save config

☐ AUSTRIA

☐ BELGIUM

☐ BULGARIA

☐ SWITZERLAND

☐ CYPRUS

☐ CZECH REPUBLIC

☐ GERMANY

☐ DENMARK

☐ ESTONIA

☐ GREECE

☐ SPAIN

☐ FINLAND

☐ FRANCE

☐ CROATIA

☐ HUNGARY

☐ IRELAND

☐ ICELAND

☐ ITALY

☐ LIECHTENSTEIN

☐ LITHUANIA

☐ LUXEMBOURG

☐ LATVIA

☐ REPUBLIC OF MONTENEGRO

☐ REPUBLIC OF MACEDONIA

☐ MALTA

☐ NETHERLANDS

Altitude 24,000 km

Off Globe

Reduction table

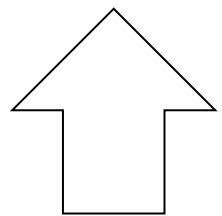
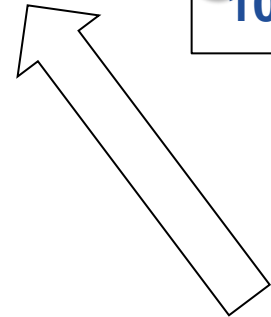
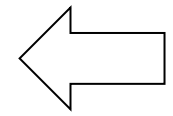
	ALL	MS1	MS2	MS3	MS4	MS5	MS6	MS7	MS8	MS9	MS10
ALL	0	0	0	0	0	0	0	0	0	0	0
NOx	0	0	0	0	0	0	0	0	0	0	0
NMVO	0	0	0	0	0	0	0	0	0	0	0
NH3	0	0	0	0	0	0	0	0	0	0	0
PM25	0	0	0	0	0	0	0	0	0	0	0
SOx	0	0	0	0	0	0	0	0	0	0	0

Air quality index

Seasonality

Annual

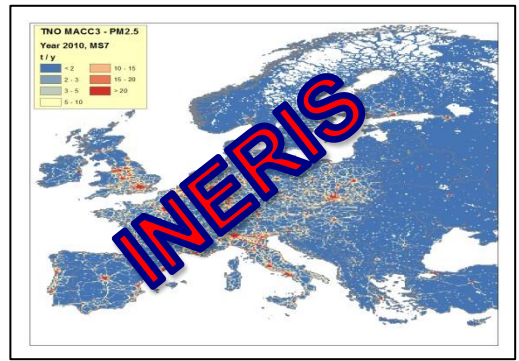
Map



Gridded emissions

SNAP

Precursors



Emission Inventory

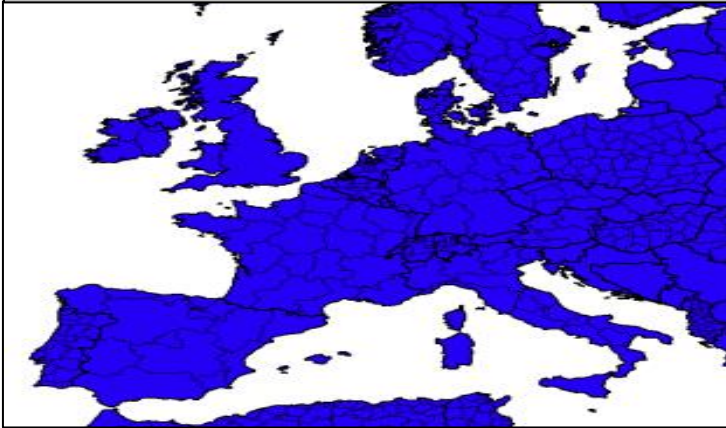


# Thank-You

# Key module of the system



## Training simulations (10-15)

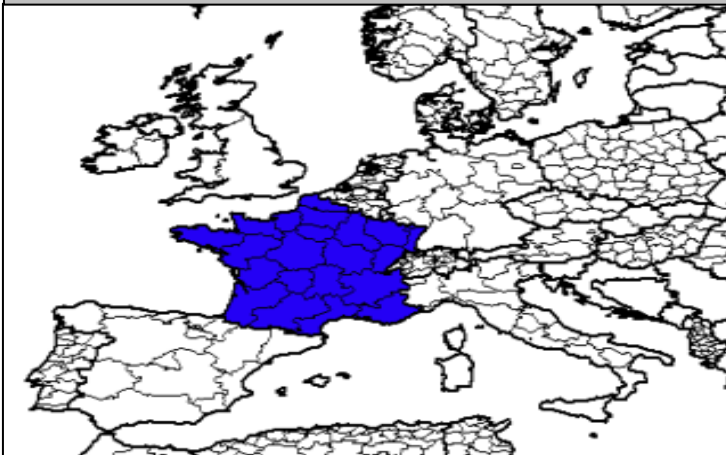


$\Delta E$  Europe wide  $\Rightarrow \Delta C$

S/R simplified relation

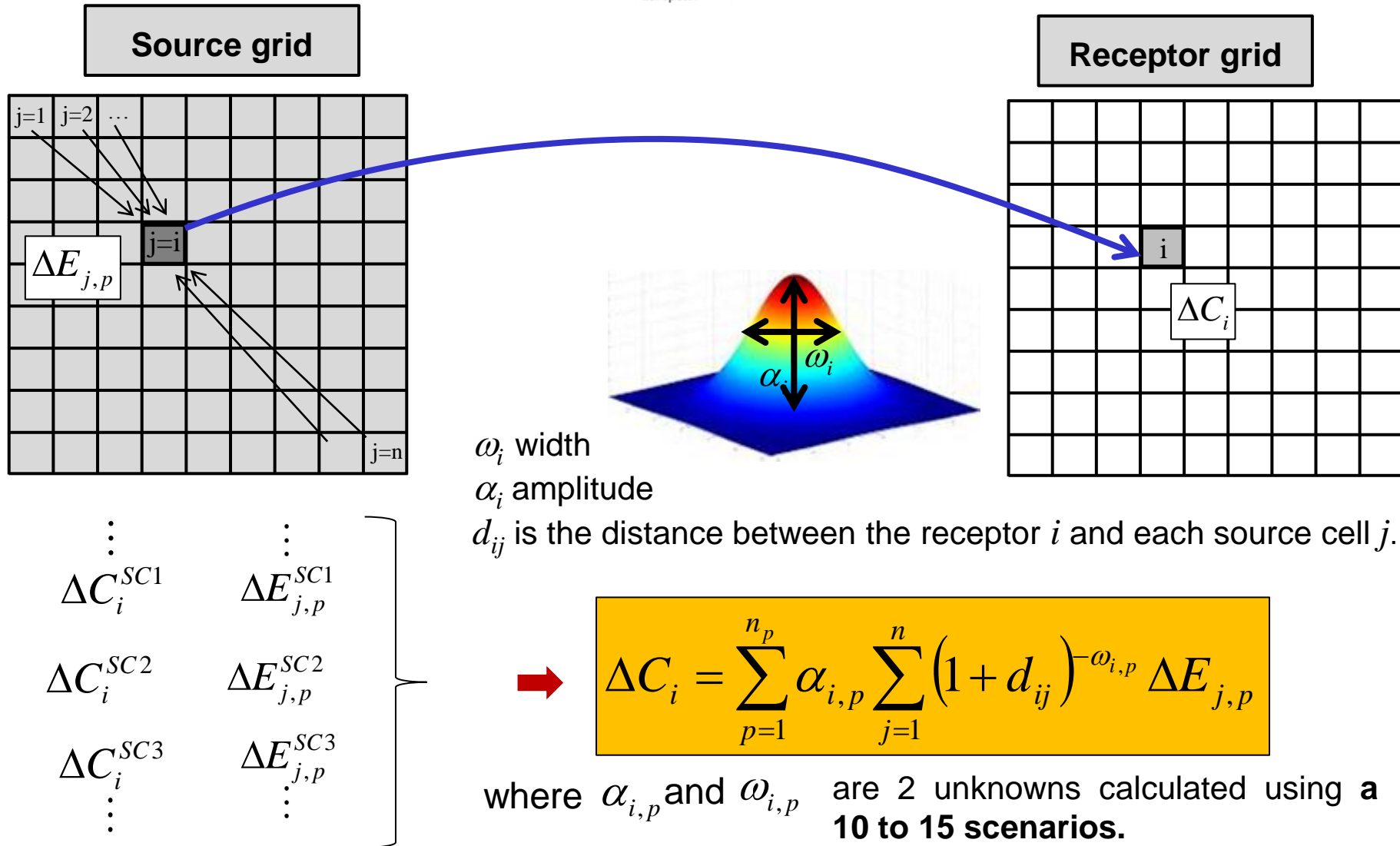
$$\Delta C_i = f(\Delta E_{dom}^p)$$

## Validation / Application



$\Delta E$  Country / region  $\Rightarrow \Delta C$

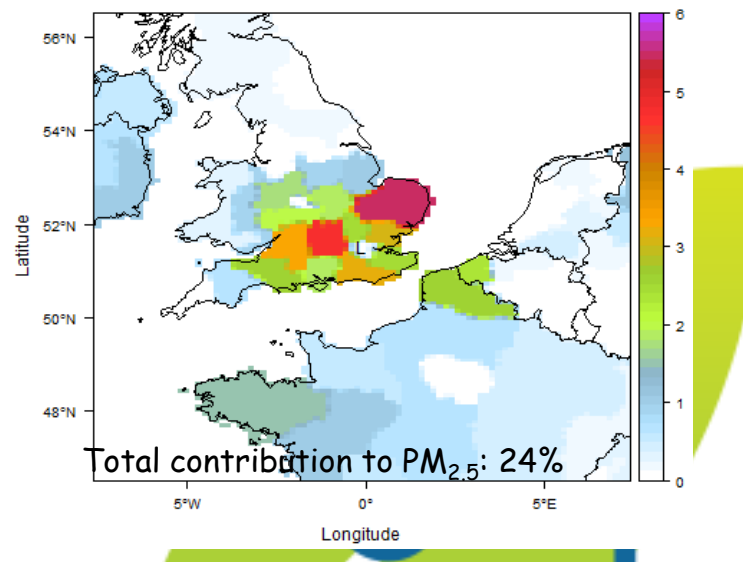
# Key module of the system



# Source apportionment

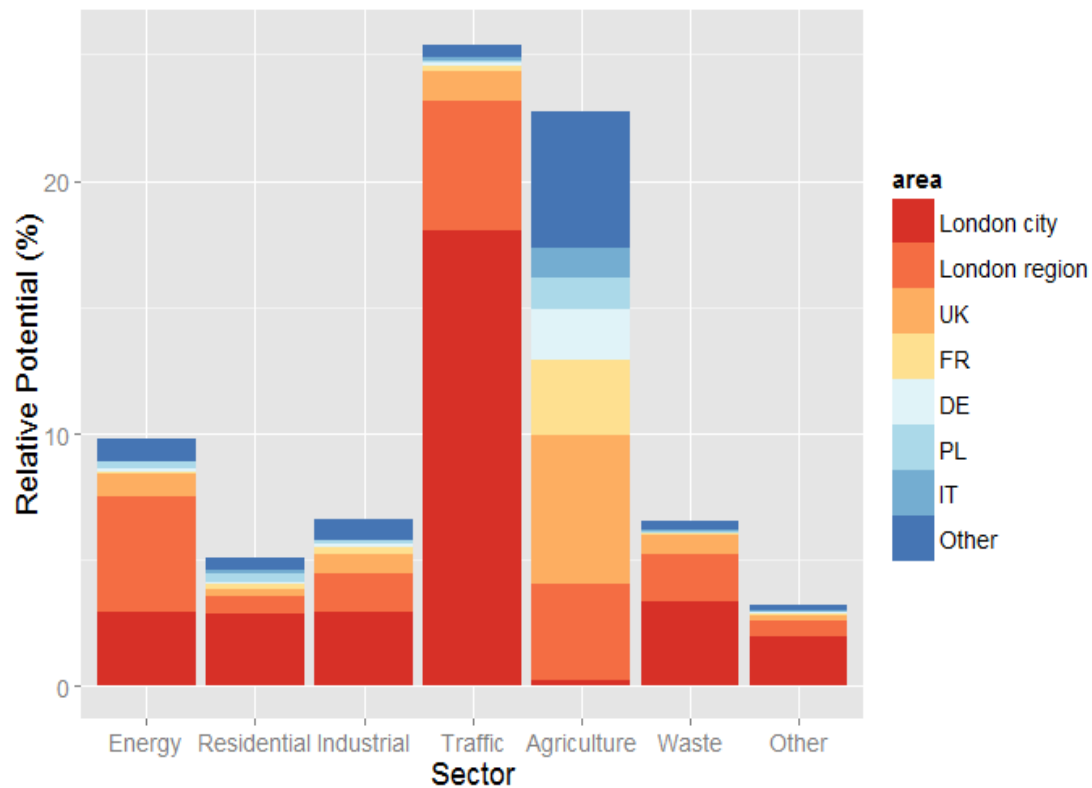
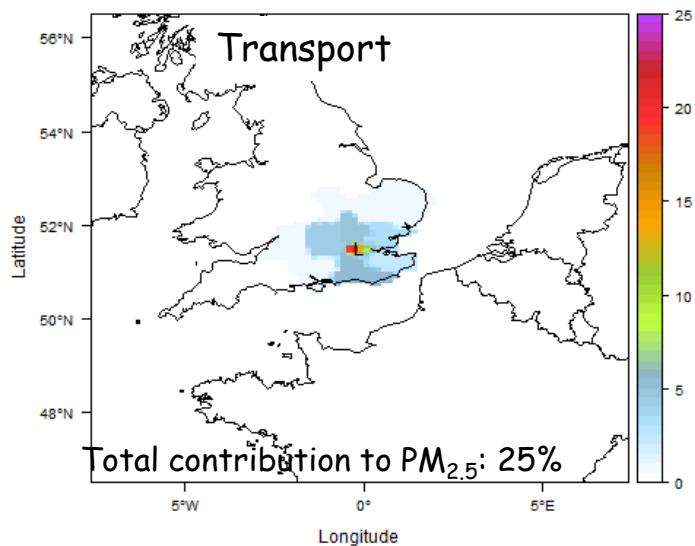


## Agriculture



London SNAP 7

## Transport



## 15:00-15:45 *Discussion*

15:00-15:20 *How can we foster synergies between source app. and planning?*

15:20-15:45 *How FAIRMODE activities can be used to support authorities in the design and assessment of AQP?*

## 15:45-16:15 *Coffee break*



# Thank-You